

Project: Casserole Carrier

INSPIRED BY MAKE & TAKE FROM DESIGNER MONICA SOLORIO-SNOW OF HAPPY ZOMBIE (THEHAPPYZOMBIE.COM)  
QUILT TESTER: KATHLEEN WILLIAMS



Whip up a carrier that's perfect for transporting casseroles or cupcakes to potlucks. The chicken and egg fabrics are from the Metro Market collection by Ellen Krans for Robert Kaufman Fabrics ([robertkaufmanfabrics.com](http://robertkaufmanfabrics.com)).

## Project: Casserole Carrier

**Materials**

- $\frac{1}{8}$  yard black-and-white polka dot (straps)
- 1 yard black egg print (pocket)
- 1 yard green chicken print (carrier)
- 1 yard insulated batting, such as Insul-Bright (*warmcompany.com*)
- Water-soluble marking pen

**Finished carrier:** Holds a 13×9×2" pan with lid

**Quantities** are for 44/45"-wide, 100% cotton fabrics.

**Measurements** include  $\frac{1}{4}$ " seam allowances. Sew with right sides together unless otherwise stated.

**Cut Fabrics**

Cut pieces in the following order. The Corner Cutting Pattern is on pages 5-7. To make a template, trace pattern onto a large sheet of paper and cut out on drawn lines.

**From black-and-white polka dot, cut:**

- 2— $3\frac{1}{2}\times 38\frac{1}{2}$ " strips

**From black egg print, cut:**

- 1— $10\frac{1}{2}\times 28$ " rectangle
- 2— $10\frac{1}{2}\times 20$ " rectangles
- 1— $10\frac{1}{2}\times 14$ " rectangle

**From green chicken print, cut:**

- 1— $16\frac{1}{2}\times 34\frac{1}{2}$ " rectangle
- 2— $16\frac{1}{2}\times 17\frac{1}{2}$ " rectangles

**From batting, cut:**

- 1— $16\frac{1}{2}\times 34\frac{1}{2}$ " rectangle
- 1— $10\frac{1}{2}\times 20$ " rectangle

**Assemble Straps**

Fold a black-and-white polka dot  $3\frac{1}{2}\times 38\frac{1}{2}$ " strip in half, wrong side inside (**Diagram 1**). Press, then unfold. Fold long edges to meet in center; press again. Refold in half and press. Topstitch  $\frac{1}{8}$ " from each long edge to make a strap. Repeat with remaining black-and-white polka dot strip to make a second strap.

**Assemble Pocket**

1. With wrong side inside, fold black egg print  $10\frac{1}{2}\times 14$ " rectangle in half, aligning short edges; press to make a  $10\frac{1}{2}\times 7$ " small pocket piece.
2. Repeat Step 1 with black egg print  $10\frac{1}{2}\times 28$ " rectangle to make a  $10\frac{1}{2}\times 14$ " large pocket piece.
3. Place  $10\frac{1}{2}\times 20$ " batting rectangle on a flat surface. Layer a black egg print  $10\frac{1}{2}\times 20$ " rectangle right side up on batting. Aligning raw edges and overlapping folds by 1", place small and large pocket pieces on black egg print rectangle (**Diagram 2**); baste. Layer remaining black egg print  $10\frac{1}{2}\times 20$ " rectangle right side down atop pocket pieces (**Diagram 2**). Sew together long edges to make a tube. Turn right side out; press flat.
4. Referring to **Diagram 3**, mark a line  $2\frac{1}{4}$ " from raw edges on both ends. Topstitch on drawn lines through all layers to make pocket.

**Assemble Outer Carrier Section**

1. Position raw ends of one strap on a short edge of a green chicken print  $16\frac{1}{2}\times 17\frac{1}{2}$ " rectangle  $3\frac{3}{8}$ " from each side edge (**Diagram 4**); baste. Topstitch 6" of each strap end in place a scant  $\frac{1}{8}$ " from folded edges to make an outer carrier unit. Repeat to make a second outer carrier unit.
2. Aligning short edges with straps, join carrier units, leaving a 6" opening at center, to make outer carrier section (**Diagram 5**). Press seam open.

**Assemble Carrier**

1. Place  $16\frac{1}{2}\times 34\frac{1}{2}$ " batting rectangle on a flat surface. Layer green chicken print  $16\frac{1}{2}\times 34\frac{1}{2}$ " rectangle right side up on batting. Referring to **Diagram 6**, center pocket atop green chicken print rectangle; baste. (The pocket is wider than green chicken print rectangle to accommodate height of casserole or baking pan.)
2. With right sides together, layer outer carrier section atop pocket. Gently pull straps through opening to allow layers to be flat. Pin together along all edges.
3. Using Corner Cutting Pattern and a water-soluble marking pen, mark cutting line on a short end of Step 2 unit (**Diagram 7**). Repeat at remaining short end. Trim layered unit along marked lines, adjusting pins as needed. Sew together along all edges. Turn right side out through opening at center; press. Slip-stitch opening closed to complete carrier.

Project: Casserole Carrier

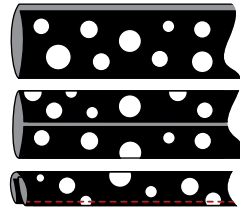


DIAGRAM 1

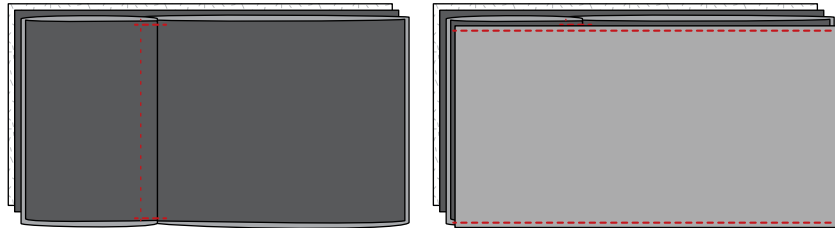


DIAGRAM 2



DIAGRAM 3

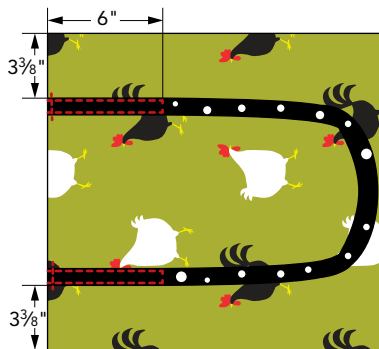


DIAGRAM 4

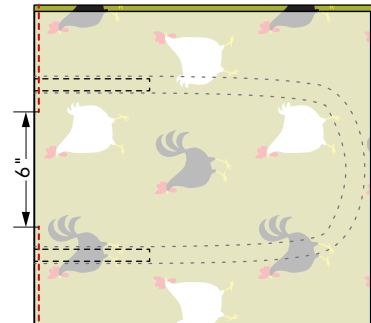


DIAGRAM 5

Project: Casserole Carrier

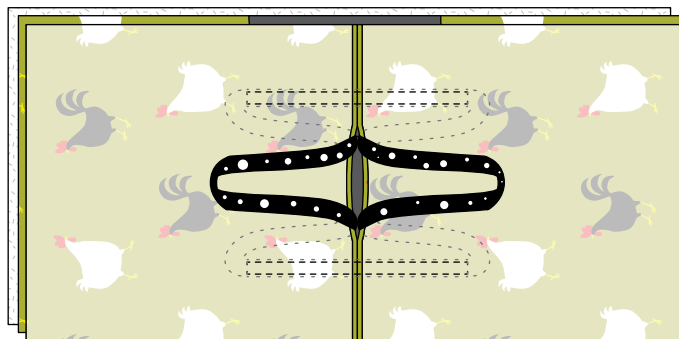
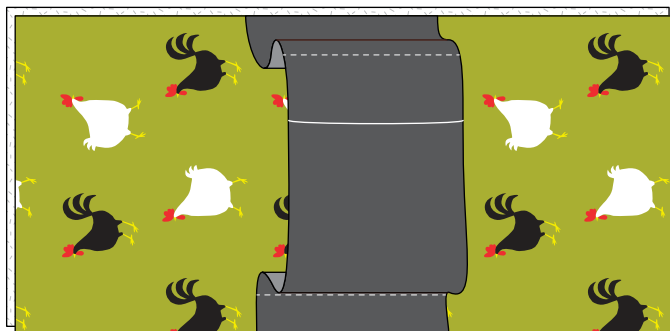


DIAGRAM 6

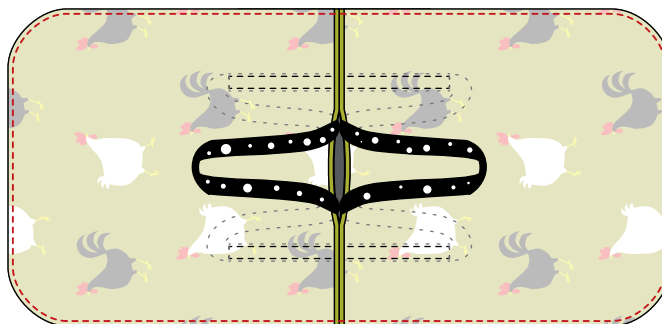


DIAGRAM 7

Project: Casserole Carrier

This box should measure 1".

← 1" →

**\* NOTE:**

When printing a downloadable pdf, set Page Scaling preference to NONE to print patterns at 100%. Do NOT "Shrink to Fit" or "Fit to Printable Area."

**To make an entire pattern,** cut out partial patterns on outside lines and tape together, matching dots and letters.

Casserole Carrier  
Corner Cutting Pattern  
1 of 3

A

B

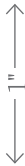
Project: Casserole Carrier



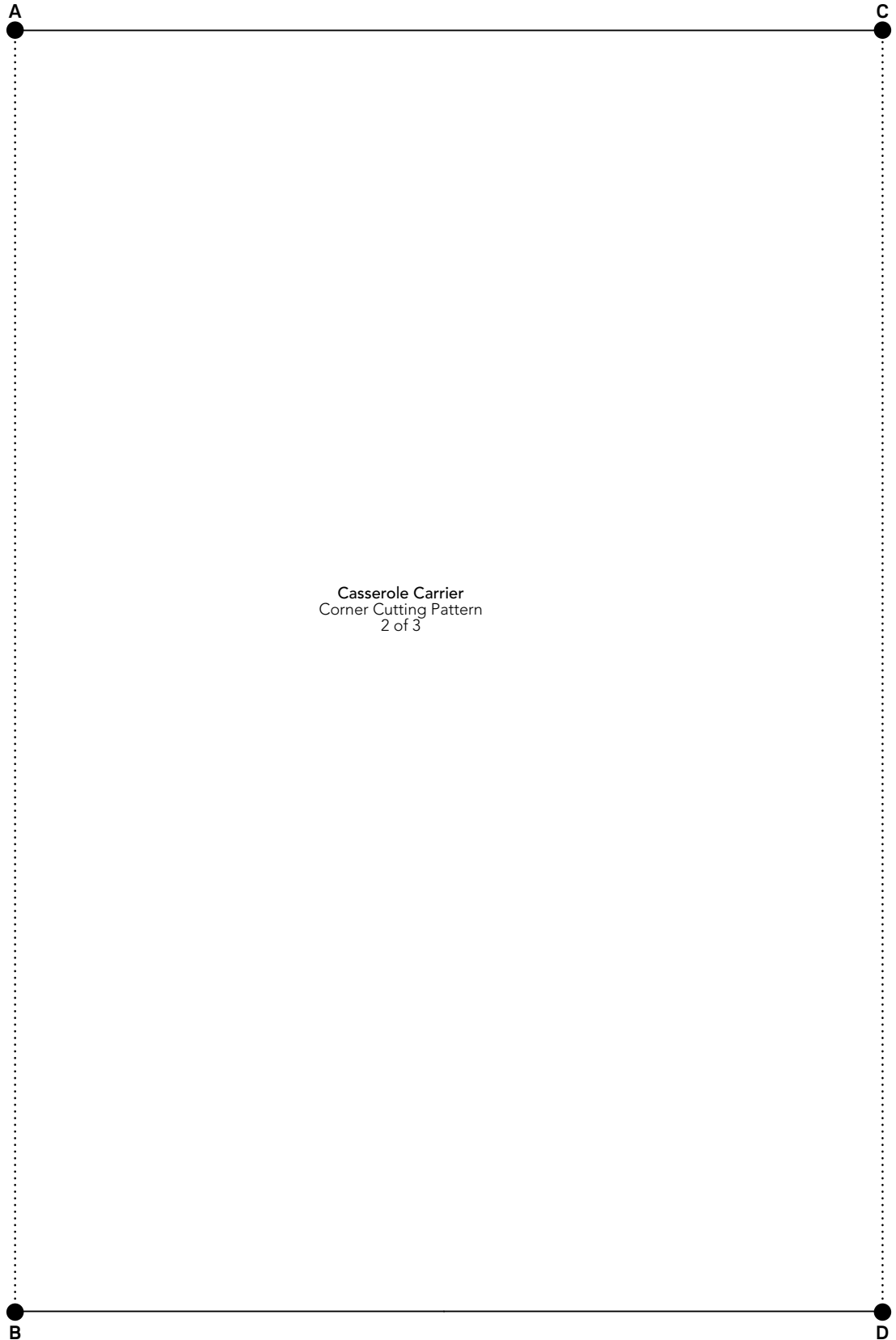
**NOTE:**

When printing a downloadable pdf, set Page Scaling preference to NONE to print patterns at 100%. Do NOT "Shrink to Fit" or "Fit to Printable Area."

This box should measure 1".



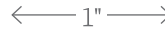
**To make an entire pattern,** cut out partial patterns on outside lines and tape together, matching dots and letters.



Casserole Carrier  
Corner Cutting Pattern  
2 of 3

Project: Casserole Carrier

This box should measure 1".



**\* NOTE:**

When printing a downloadable pdf, set Page Scaling preference to NONE to print patterns at 100%. Do NOT "Shrink to Fit" or "Fit to Printable Area."

**To make an entire pattern,** cut out partial patterns on outside lines and tape together, matching dots and letters.

Casserole Carrier  
Corner Cutting Pattern  
3 of 3

C

D